



Miniature Horizontal Pushbutton

Specifications

Electrical Ratings	100mA @ 30VDC	Insulation Resistance	>100MΩ min
Electrical Life	100,000 cycles typical	Operating Temperature	-40°C to 85°C
Contact Resistance	<50mΩ initial @ 2-4VDC, 100mA	Storage Temperature	-40°C to 85°C
Dielectric Strength	2000Vrms min		

Materials

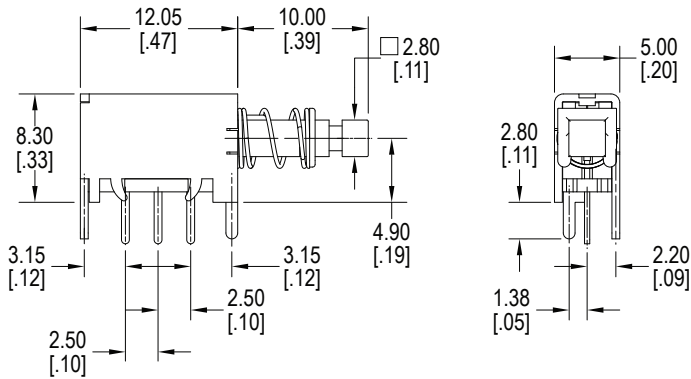
Actuator	Acetal
Housing	Steel, Tin-Plated
Base	Phenolic
Contacts	Phosphor Bronze, Silver Plated
Terminals	Brass, Silver Plated

Ordering Information

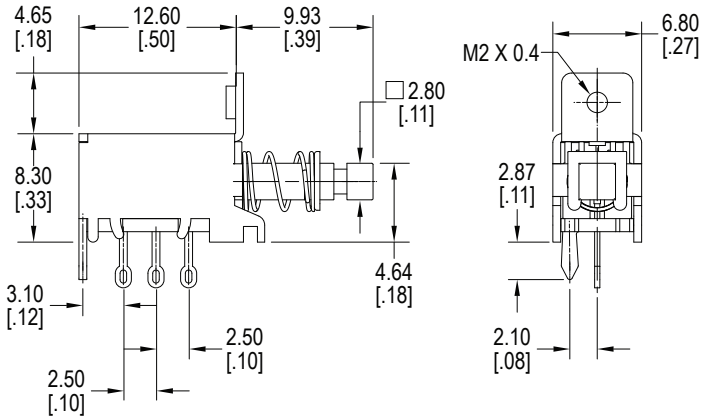
1. Series	MP	1	P	P	L	C033
MP						
2. Number of Poles 1 = SPDT 2 = DPDT						
3. Terminals S = Solder Lug P = PC Pin						
4. Case Style P = With case PC pins (standard for PC pins) M = With threaded panel mount tab (standard for solder lugs)						
5. Switch Function N = Non-Latching L = Latching						
6. Caps		Cap Colors				
Blank = No Cap	C03					
C01	C04	**See Cap Options for color availability				
C02	C05					

Dimensions

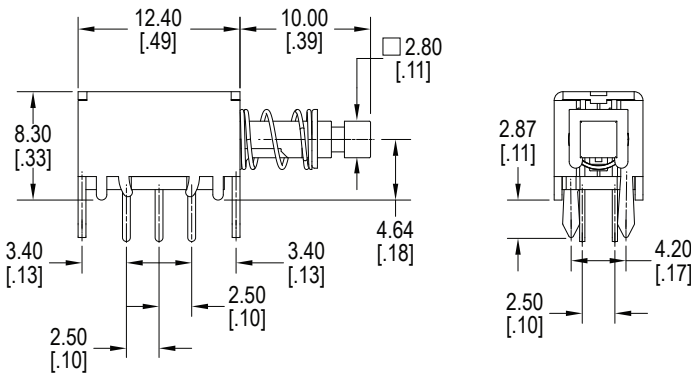
MP1P



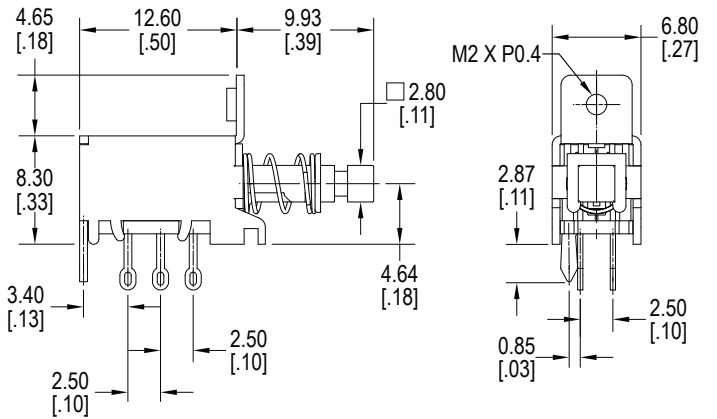
MP1S



MP2P

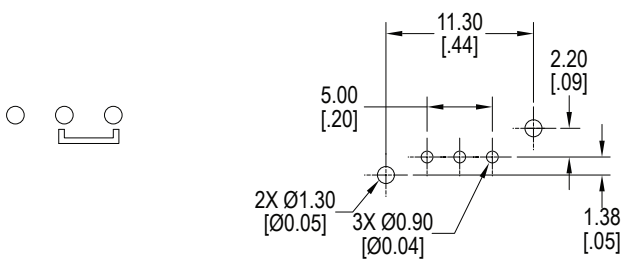


MP2S

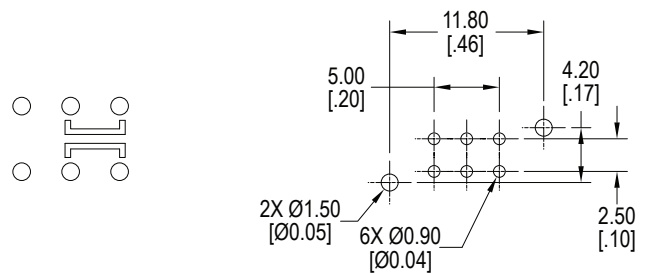


Schematics & PC Layouts

SPDT

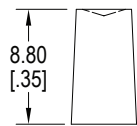
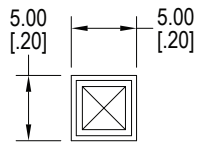


DPDT



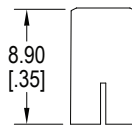
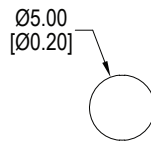
Cap Options Contact Factory for other available colors

C01_



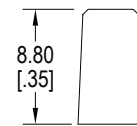
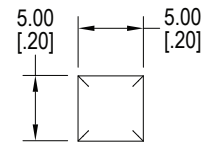
1 = White, 2 = Black
3 = Red, 9 = Light Gray

C02_



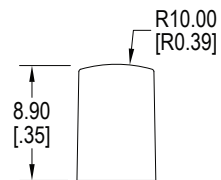
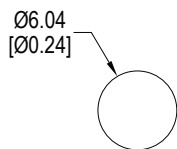
1 = White, 2 = Black
3 = Red, 9 = Light Gray

C03_



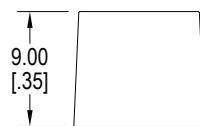
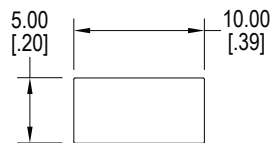
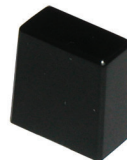
1 = White, 2 = Black
3 = Red, 9 = Light Gray

C04_



1 = White, 2 = Black
3 = Red, 9 = Light Gray

C05_



1 = White, 2 = Black
3 = Red, 9 = Light Gray